



Heart Case Instructions for Use

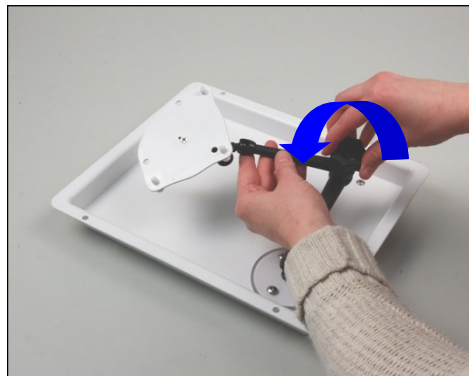
THE SET UP AND DISASSEMBLY METHODS FOR YOUR TRAINER DESCRIBED IN THESE INSTRUCTIONS ARE IMPORTANT TO ITS SUCCESSFUL USE. PLEASE READ THE INSTRUCTIONS THOROUGHLY AND FOLLOW AS DESCRIBED.

PLEASE NOTE: While the trainer is intended for multiple use, it is not indestructible. In order to make it lifelike, some elements are made of materials that will fail if misused. To insure the longest useful life of the trainer, please handle it with care and make sure to protect it when shipping or traveling.

Remove the trainer from the case. To access the interior of the thorax, pull up on all four quick-release fasteners on the trainer sides and lift off the cover. The base of the trainer serves as a catch basin for fluids should you require.

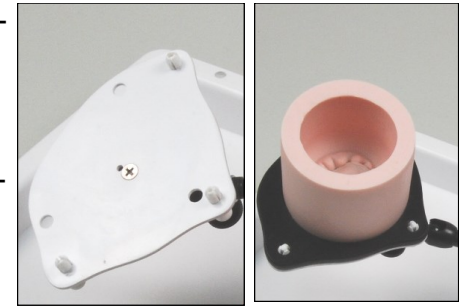


There is an adjustable arm fixed to the bottom of the trainer base; it is fully positionable. To adjust, loosen the arm by turning the center lever counter-clockwise. Then position the arm in your preferred orientation and turn the lever clockwise to lock.

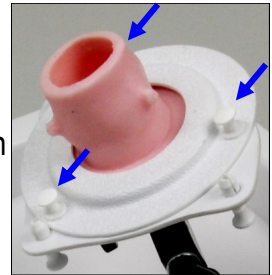


Questions? Contact The Chamberlain Group toll free at 800.562.7569. International: +1.413.528.7744.
934 Main Street, Great Barrington, MA 01230 www.thecgroup.com

The white triangular plate on the end of the arm is used to mate a variety of trainers and trainer support attachments. As is, you can attach the Mitral Valve Pro-lapse and Mitral with Atria to this plate. Pull down on the three quick-release fasteners on the underside of the plate, align the mitral trainers, and push up to lock.

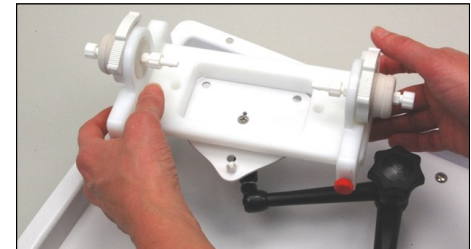
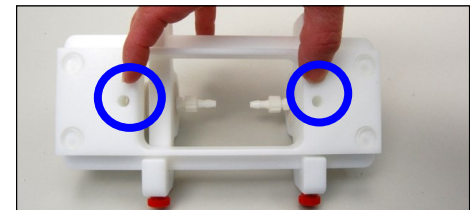


The ring that holds the Aortic Root trainers to the arm attaches via the three holes in the white triangular plate. There are three mating quick-release fasteners in the ring to lock the root to the arm. Center the Aortic Root in the ring from the underside, pull up on the three fasteners on the ring, align with the holes in the triangular plate and push down to lock.

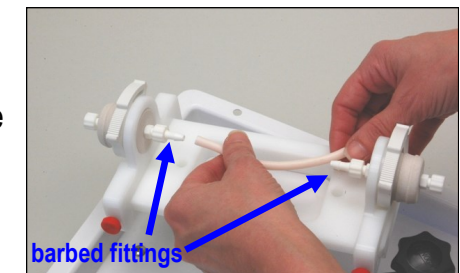


NOTE: The fasteners must be pulled back, then aligned, and then pushed forward to engage.

For aortic and small vessel anastomosis the kit includes a rectangular support with two gray posts. The support has two holes on the underside; these align with two of the quick-release fasteners on the white triangular plate as shown. Once the support is locked into place, you may prepare it to accept small vessels or aortas.



For small (c. 4mm ID) vessel anastomosis, orient the gray posts so that the barbed fittings face in toward the center of the rectangular support. Slide the vessel onto one barbed fitting, then the other. **CONTINUED ON REVERSE**

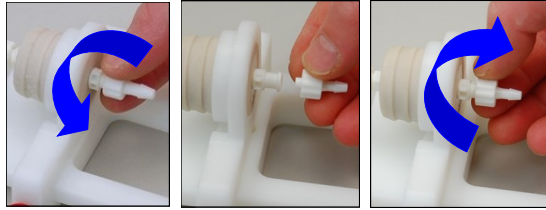




thechamberlaingroup

Heart Case Instructions for Use, continued

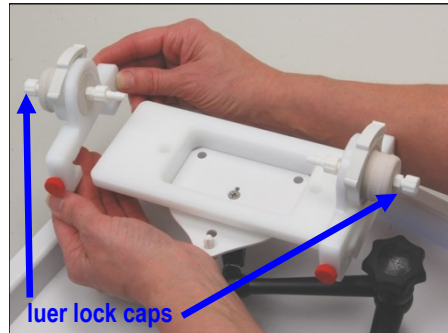
To replace the 4mm with the 3mm barbed fittings, turn counter-clockwise, remove and retain. Line up the 3mm barbed fittings and turn clockwise to attach.



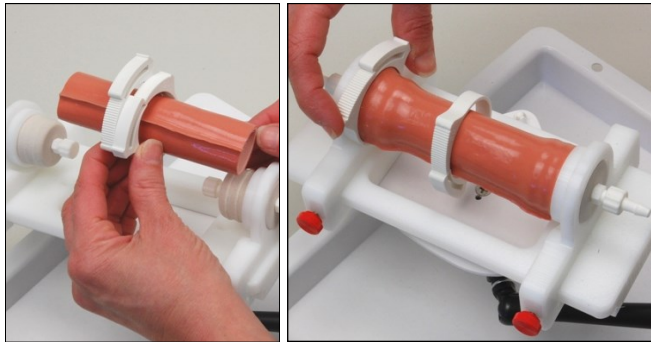
You may adjust tension on the vessel (or aorta) by turning the red knobs shown to loosen the two gray post brackets, allowing them to slide closer or farther apart on the rectangular support. They turn counter-clockwise to loosen, clockwise to tighten.



To switch the gray posts to accept an aorta section, loosen the red knobs and slide the post brackets off the ends of the rectangular support as shown. Turn the brackets around and slide them back onto the support, then tighten where you wish via the red knobs. Remove the luer lock caps from the ends of the posts and retain.



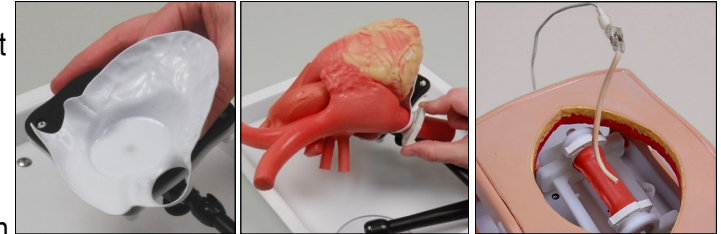
There are two hose clamps stored on the gray posts. Remove them and slide them over the aorta section. Slide the aorta over the gray posts and tighten the clamps to seal for pressurizing.



The aorta section can then be pressurized with water or air by detaching the barbed fittings (please retain), replacing with the syringe on one side and, once the aorta is filled, the luer lock cap on the other.

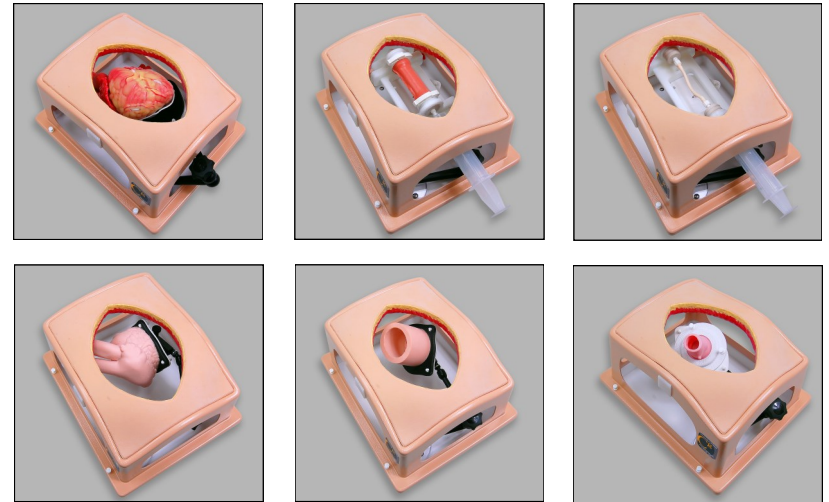


To use a CABG Heart with the trainer, mate the heart cradle, shown at right, to the triangular plate in the same way you do with the mitral trainers.



Slide the IVC through the cradle as shown and lock in place with a hose clamp. We have provided a vessel stabilizing clip to hold the graft vessel for anastomosis.

Once the anatomy trainer of choice is mounted on the arm, you may adjust the arm as described on the reverse. Then return the thorax cover to the base, lock into place, and initiate your training.



Questions? Contact The Chamberlain Group toll free at 800.562.7569. International: +1.413.528.7744.
934 Main Street, Great Barrington, MA 01230 www.thecgroup.com